



旭格鋁窗 AWS
Schüco Window AWS

旭格為了能符合鋁窗所面臨的各種需求，創造了全新AWS鋁窗 (Aluminium Window System) 系統。AWS鋁窗延續旭格一貫功能優越的特質，融入建築的設計元素；以模組化的元件，提供高效率的隔熱保溫性能，並同時縮小了結構深度與面寬，塑造出結合功能、舒適與品質於一身的鋁窗系統。

所有五金件的操作，都可以手動、電動或經由建築的中央控制系統來操作；中央控制系統也可在窗、門與帷幕牆之間共通，統籌控制與運作。依據德國標準DIN V ENV 1627，防盜功能高達WK3等級的設計；加上符合德國標準DIN 18024和18025，專為老年與殘障人士所設計的無障礙裝置；讓旭格AWS成為市面上功能最完善的鋁窗系統。

With the new generation of AWS windows (Aluminium Window System), Schüco has created a system for all requirements. Functional benefits are combined with architectural and design aspects. Perfectly integrated components combine benefits such as high levels of thermal insulation with low basic depths and narrow face widths.

All fittings can be operated manually, mechatronically or centrally via a building management system. Uniform interfaces between windows, doors and façades allow this. Burglar resistance up to WK3 (DIN V ENV 1627) as well as fittings for easy access for the elderly and disabled in accordance with DIN 18024 and 18025 complete the range.

內容
Contents

4	能源 ² Energy ²
8	能源與安全性 Energy and Security
12	能源通過自動化 Energy through Automation
18	能源與設計 Energy and Design
22	產品介紹 Products

Schüco TipTronic
通過夜間冷卻進行節能
Schüco TipTronic
Saving energy through
night-time cooling



能源² — 節約能源並創造能源
Energy² — Saving energy
and generating energy

能源²—節約能源並創造能源

Energy² – Saving energy, generating energy

傳統能源正逐漸的枯竭，能源的費用也在不斷攀升，政府對於建築相關的環保法規也是越來越嚴苛。談到綠色建築，話題幾乎與連接內外空間的建築外牆脫離不了關係；無論是建築師、營建商或是一般消費大眾，在進行規劃、購買、銷售或租賃房屋時，建築物在能源節約或消耗的效率上，也己成為審核的關鍵。

利用能源²—節約能源並創造能源——旭格在建築外觀包覆系統的研發，建立了完整的典範：全新的節能科技，同時具備經濟與高效能等優勢，更能達到設計師與業主的高規格需求。全新AWS鋁窗系統，完整呈現了旭格典範的核心價值；它不但在隔熱保溫方面奠定了新的標準，也同時使建築的外觀設計擁有更多發展的空間。

旭格不斷的改進鋁窗戶的隔熱保溫性能；旭格窗AWS 75.SI(可視面寬度117mm)的 U_f 值高達1,4 W/m²K，使鋁窗的節能與經濟效率提升到全新的境界。

Rising energy prices, finite resources and more efficient climate protection mark a development with enormous significance for the future. It has also resulted in the energy consumption of buildings becoming more influential on planning, buying, selling or renting.

With “Energy² – Saving and generating energy”, Schüco has created a comprehensive model for the whole building envelope: new energy concepts, both economical and efficient, for integration into the complex requirements of developers and investors.

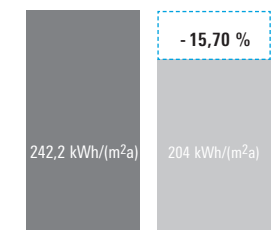
The new generation of AWS windows is a central part of this

model. They set new standards in thermal insulation and, at the same time, increase the options for architectural design.

Schüco has succeeded in continually improving the thermal insulation of aluminium windows. Schüco AWS 75.SI windows (face width 117 mm) achieve a U_f value of 1.4 W/m²K, a value which has given new dimensions to the terms saving energy and efficiency.

現有建築物的主要能源消耗，以典型的辦公大樓為例

Primary energy consumption in existing stock taking typical office building as an example

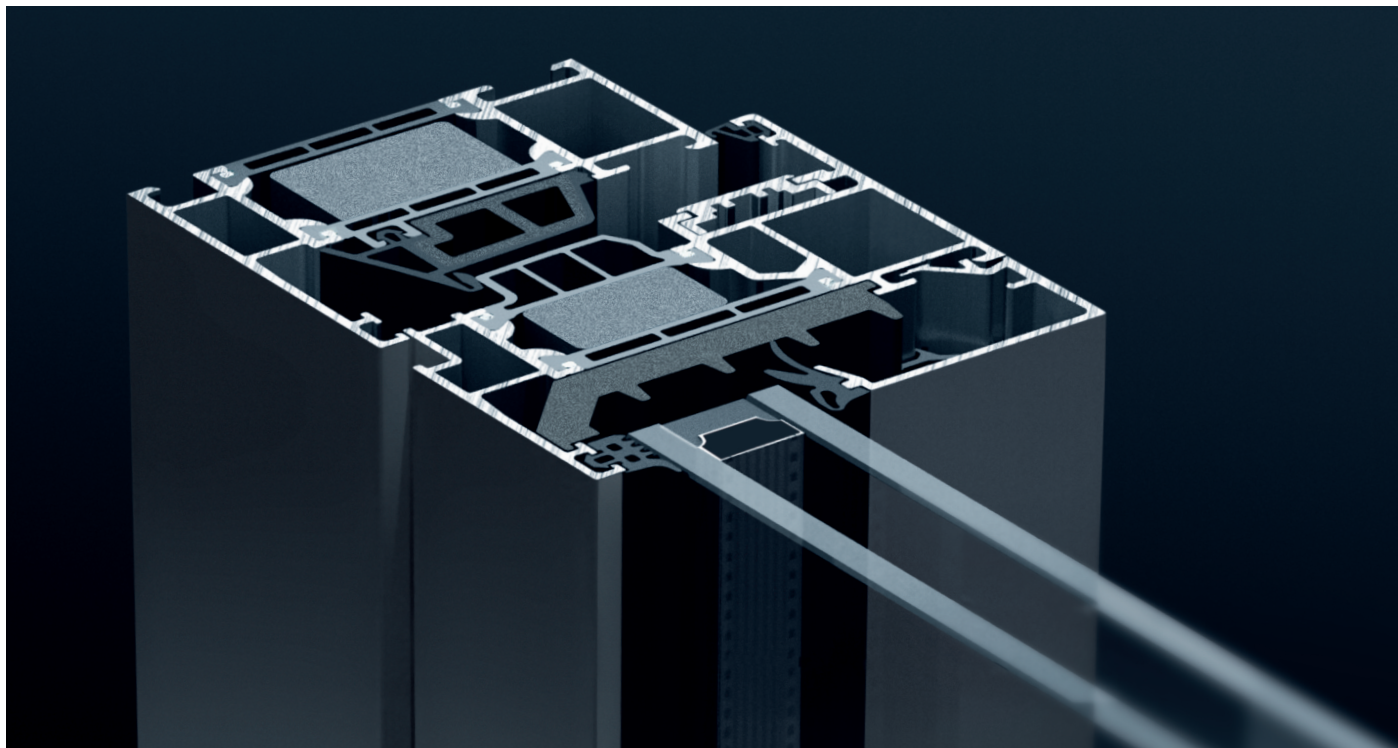


- 使用舊窗戶時的能源消耗：
 $U_w = 2.8 \text{ W/mK}$
Energy consumption with old windows
Example: $U_w = 2.8 \text{ W/mK}$
- 使用旭格鋁窗AWS 75.SI時的能源消耗：
 $U_w = 1.4 \text{ W/mK}$
Energy consumption with Schüco Window AWS 75.SI
Example: $U_w = 1.4 \text{ W/mK}$

計算基礎：辦公樓，使用面積1640 m，窗戶面積472 m，依照1980年代的隔熱標準及保暖技術。所節省的22,2 kWh/(ma)，納入使用面積，等於為建築物每平方米節約2升汽油，或等於每年節約3280公升汽油。少燃燒的3280公升，每年能夠減少二氧化碳排放量9,1噸，相當於汽車行駛約45500 km 所排放的二氧化碳量。

Calculation base: Office building, 1640 m usable area, window area 472 m, standards of thermal insulation and heating technology from 1980s. The resulting saving of 22.2 kWh/(ma) usable area is equivalent to a saving of approx. 2 litres of oil per m or 3280 litres per year for the building. The consumption of 3280 litres less oil reduces CO₂ emissions by 9.1 tonnes per year, equivalent to approx. 45,500 km car miles.

能源利用效率 Energy efficiency



旭格AWS 75.SI：最高的隔熱值
($U_f 1,4 \text{ W/m}^2\text{K}$)，可視面寬度117 mm

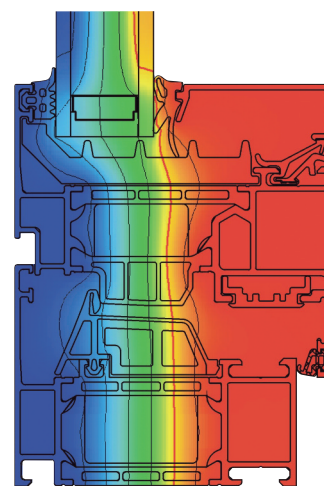
Schüco AWS 75.SI: the highest thermal insulation value ($U_f 1.4 \text{ W/m}^2\text{K}$) with a face width of 117 mm

每項新的發明，皆是起始於一個想法；從概念的執行到實際將一個全新的鋁窗產品投入市場，旭格均在德國總部的技術中心完成。就是在這裏，旭格依據節能隔熱的需求，設定系統技術與品質的基礎。

旭格是專精於系統化外牆設計的技術革新者；旗下的三個鋁窗系列：AWS 65、AWS 70.HI與AWS 75.SI，展現出旭格對於綠建築在鋁窗技術上的創新。透過擴大的隔熱區域、更優化的中間密封膠條與隔熱性能更佳玻璃框槽設計，讓旭格鋁窗在工藝技術與隔熱效能上，均能長期保持於領先其他廠牌的龍頭地位。

Every new development begins with an idea. From implementation to market launch of a new window system, Schüco relies on its own Technology Centre. Here, the technical basis and qualities are worked out and the requirements for systems with optimum thermal insulation are laid out.

Schüco is the leading innovator for system-based building envelopes. The three Schüco series AWS 65, AWS 70.HI and AWS 75.SI, represent a new generation of windows for the energy-orientated future of construction. This is achieved with enlarged insulation zones, optimised centre gaskets and improved insulation of the glazing rebate.

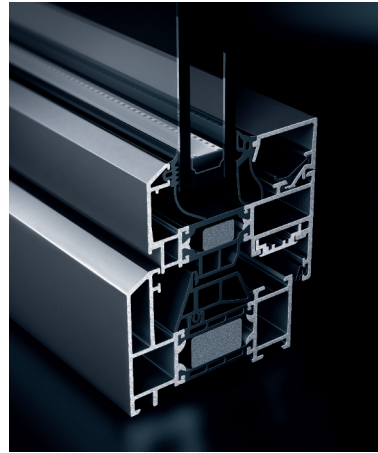


鋁合金窗AWS 75.SI的新的隔熱標準
The new thermal insulation standard
for aluminium windows AWS 75.SI

一個節能鋁窗系統必須符合多種市場條件；從傳統的薄型窗框到圓滑的SoftLine窗框線條，旭格AWS鋁窗系統，除了在功能上的靈活度與獨特的性能之外，也提供多元化的設計選擇。

旭格鋁窗系統對於節能效率、外觀設計與操作功能，有著各種不同程度與等級的搭配，能夠符合各種建築形式的使用。AWS系統的標準型窗式門，使用易於通行的無障礙門檻，其20 mm的門檻高度適合老年人使用，適合露臺或陽臺門等用途。

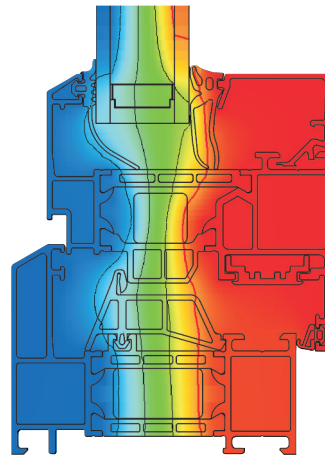
An energy-efficient window system must satisfy different requirements. In addition to technical flexibility and numerous special features, the Schüco AWS window system therefore offers a variety of design options from classic narrow face widths to rounded SoftLine vent contours. The energy-efficiency, design and operation of all systems covers the entire spectrum of building projects. With the standard shape window door, the AWS system allows for easy-access thresholds of 20 mm for homes for the elderly and for terraces or balcony doors.



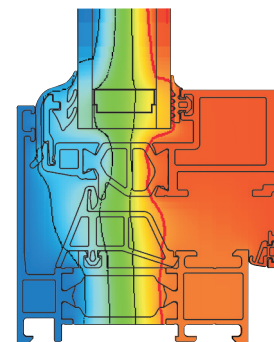
旭格鋁窗 AWS 70 RL.HI
Schüco Window AWS 70 RL.HI



旭格鋁窗 AWS 65 BS
Schüco Window AWS 65 BS



旭格鋁窗 AWS 70 RL.HI
減少了熱量的流失
Schüco Window AWS 70 RL.HI
Reduced heat loss



旭格鋁窗 AWS 65 BS
常規的隔熱保溫性能
Schüco Window AWS 65 BS
Conventional thermal insulation



能源與安全性

Energy and Security

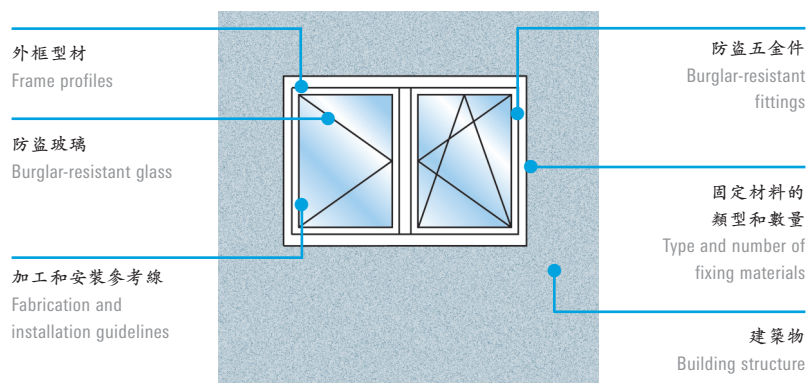


能源與安全 Energy and Security

窗戶與窗式門是竊賊經常選擇闖入的部位，超過半數的竊盜案件都與門窗防盜功能不足有關。旭格鋁窗系統先進的安全設計，保護您人身與財產的安全。

According to recent German crime figures, windows and window doors are the preferred place of entry for burglars. More than half of all burglars start there. Schüco window systems therefore provide advanced security features.

Components for burglar resistant windows



以建物的鎖來說，安全鎖芯、電磁開關、用於門上的電動多點鎖、帶鎖門把、窗式門上的隱藏式五金、以及Schüco AvanTec系列五金等的運用，使窗戶的安全性達到歐盟規範WK3等級。

Starting with the locking arrangement of a building project, security profile cylinders, magnetic switches, electric multi-point locks on doors, lockable window handles or Schüco AvanTec security fittings on windows and window doors increase passive security up to security class WK3.

電子機械式驅動的鋁窗，在使用Schüco TipTronic平開下懸五金的情況下，窗戶的安全等級可以達到WK2。自動防夾手裝置，提供使用者在操作時的安全。在安全需求較高的區域，旭格系統亦能提供有效的防彈與防爆功能。

With the Schüco TipTronic turn/tilt fitting, mechatronic aluminium windows achieve security class WK2. Automatic anti-finger-trap protection contributes to user safety. In areas of high security, Schüco system solutions ensure effective bullet and blast resistance.

防盜

Burglar resistance

旭格在安全組件的結構與用料上，均具備高規格的安全性能，加上多層防護原則的運用，使旭格五金件，均能達到符合歐盟安全標準WK1、WK2與WK3安全等級。雖然旭格五金符合DIN V ENV 1627的最嚴格的標準，卻沒有犧牲功能性與設計美感；旭格的電子機械式五金TipTronic，以及通過VdS檢測的電磁開關，均能使用在每種旭格AWS鋁窗中，串聯成具備WK2安全等級的鋁窗系統。

The construction of and materials used in Schüco security components show a high level of basic security. WK1, WK2 and WK3 security class fittings are based on a multi-layer security concept. This fulfils the stringent requirements of DIN V ENV 1627 without compromising on design.

Schüco TipTronic mechatronic fittings and VdS-approved magnetic switches can be added to Schüco AWS windows to create a networked security system up to security class WK2.

安全等級

Security classes

依據歐盟現行的標準，旭格的防盜安全系統能夠提供WK3等級的防護性能。運用特殊設計的旭格AWS系統五金配件，所有的安全功能皆能隱藏在鋁窗框架中，讓竊賊無法使用外力破壞系統結構。

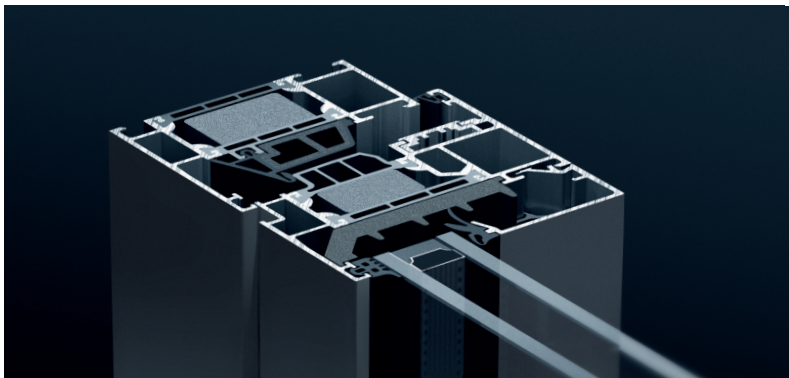
Schüco burglar-resistant security systems guarantee protection up to security class WK3 in accordance with current European standards. Using special accessories tailored to the respective base system, all security functions are concealed in the frame which affords them maximum protection against attack.

WK1 WK1	WK2 WK2	WK3 WK3
組件足以抵擋住利用身體重量企圖闖入的行為：如腳踢、撞擊、向上抬起與拉扯。對於撬開工具的使用，僅具備有限的保護功能。	組件足以防止使用簡易工具的開啟，如螺絲起子、鉗子與小型斧頭。	組件足以防止使用多樣工具的破壞型侵入，如使用多種螺絲起子或鐵撬等。
Components in this security class provide basic protection against physical attacks such as kicking, flying kick, shoulder charge, lifting upwards and tearing out. These building components only offer limited protection against the use of lever tools.	Opportunist burglars also use simple tools like screwdrivers, pliers and hand axes to try to break into locked and bolted building components.	Burglars sometimes use a second tool, such as a screwdriver, or a crow-bar to try to break into locked and bolted building components.

統一規格的防護功能 Uniform protective features

旭格AWS鋁窗的鋁擠型材提供了高規格的基本防護功能；例如將所有縫隙設計成狹小且難以施力的造型，搭配旭格AvanTec隱藏式五金組件，藉以阻止盜賊使用工具強行進入室內，達到獨特的防禦功能。另外像是多點式安全鎖，以及特殊的防鑽及防撬裝置，使旭格鋁窗能夠達到WK3的安全等級。就包括設計樣式豐富的門窗把手，也都經過特別設計，使旭格鋁窗的防護功能更加完善。

The robust aluminium profiles of Schüco AWS windows provide high levels of basic security. Small gaps prevent the use of tools for forced entry. The concealed Schüco AvanTec fittings for windows and toplights are particularly resistant. Protection up to security class WK3 is provided by additional security locking points and special anti-drill protection and protection against levering out, even using heavy-duty tools. Lockable handles in the universal Schüco design complete the protection features.



型材
高規格的基本防護功能

Profile
High level of
basic security



Schüco AvanTec
隱藏式五金組件 WK3
Schüco AvanTec
WK3 mechanical fittings



Schüco TipTronic
氣窗 防盜等級 WK2
Schüco TipTronic
Toplight with WK2
burglar resistance



通用把手設計
安全按式把手 push-in
可鎖
Universal handles:
Security push-in handle,
lockable



通用把手設計
帶有按鈕的安全把手
Universal handles:
Security handle with
push button

能源與自動化

Energy through Automation

能源與自動化 Energy through Automation

自動控制系統，在包覆建築的外牆上，有相當大的發展潛力。自動開啟關閉門窗的控制系統，能依照氣候的變化，針對建築物在不同時間對通風、採光與遮陽的需求，做監控與調整；同時，在串聯內部照明以及空調控制的安排下，將自然資源與能源的消耗做最佳化的調整，以達到能源節約的效果。中央控制的門窗，可以一方面創造能源，也可自動控制窗戶系統的開啟，在夜間為大廈完成冷卻。

旭格的目標，是將包覆建築外牆上所有的活動組件，均納入自動控制系統的網路中。一棟綠建築，只有經過中央控制系統精密的監控與調整，才能將能源的節省與再運用潛力徹底的發揮。旭格Control Panel為建築外牆門窗的設定、調整、遮陽、透光、防止反光與室內氣候的控制，提供了更多發展的可能性。簡易、人性化的操作，結合美觀的設計與完整的功能性，讓舒適與能源節約成為共同體。

Automatic control of the building envelope is a topic with a big future. Numerous functions such as ventilation, shading, security, generating energy and regulating room climate must be combined to optimise energy use. This is achieved with automatic opening and closing systems for windows that control natural ventilation cycles, and daylight and sunlight-dependent shading systems, which are an ideal choice for internal lighting, heating and climate control. Centrally controlled windows and doors can be used, on the one hand, to generate energy and, on the other hand, to ventilate the building at night via controlled opening of windows.

It is a stated aim of Schüco that all active elements in a building envelope should be electronically networked and automatically controlled. The energy-saving potential of the building envelope can only be exploited fully if thermal insulation, energy generation and the building management system are all integrated into one complete system. The Schüco Control Panel opens up new possibilities for operating, setting and adjusting opening units, solar shading, anti-glare, light and climate control. Intuitive, easy operation, timeless design and comprehensive functionality combine modern comfort with energy-efficiency.



Schüco ControlPanel

用於建築外牆的人性化操作

The Schüco Control Panel for intuitive operation of the building envelope

旭格TipTronic五金組件 Schüco TipTronic fitting

旭格TipTronic是第一個將能源管理、安全、建築自動化與設計美學結合在一起的電動機械五金。經由TipTronic，窗戶成為建築自動化中的主角；一組TipTronic控制裝置，能夠連接並控制多達30組窗戶。無論手動控制、時間控制或透過感測器控制，旭格 TipTronic隱藏式五金件的操作都相當簡便。旭格以豐富的研發經驗與先進的技術工法，不斷的創新，不但是業界科技的先鋒，更在綠建築的設計上，創造實質的貢獻。

Schüco TipTronic is the first mechatronic fitting to combine energy management, security, building automation and design. The windows thus become an integral part of building automation. Schüco TipTronic concealed fittings are easy to operate, whether manually, time-controlled or sensor-controlled.

Up to 30 windows can be connected and controlled with one group control device. In this way, Schüco has further developed its reputation as the leading innovator for standard products and made an important contribution to building automation.



product
design
award

2006



獲得2006年IF產品設計獎：
Schüco TipTronic鋁窗
Awarded the if
product design award
for 2006: Schüco
TipTronic window

Schüco TipTronic:
通过德国TUV
检测的安全性
Schüco TipTronic:
Security with TÜV
approval

擁有創新技術的自動功能 Automation with innovative technology

旭格TipTronic五金組件，以電子機械結構取代了傳統的窗框鎖桿；其傾倒的功能是經由一個獨立的鉸鏈傳動裝置驅動。電動機械五金組件，結合即時操作與建築自動化的優點；傾倒的操作經由符合人體工學的把手上的兩個按鈕控制，而平開則是通過手動旋轉把手，以傳統窗戶的方式開啟。TipTronic同時具備防止夾手功能提供，以確保使用者的安全。

In place of locking bars located in the vent frame, Schüco TipTronic lock fittings use individual motors. The tilt function is operated by means of a separate chain actuator. The mechatronic fitting combines real-time operation with the advantages of building automation.

The window is operated using an ergonomic handle, which controls the tilt function by means of two buttons. Integrated anti-finger-trap protection provides maximum security. As with conventional windows, the turn function for the window is completed by turning the handle.

環狀扁平電線
All-round ribbon cable

軟體控制的防夾手裝置與選配的介面板
Anti-finger-trap via software and optional connecting block

手動操作窗與機械電動窗擁有相同的外觀
Same appearance for both manually operated and mechatronic windows

窗框中的一體式電線
No disruption to lines of window

通過電磁開關監控開啟/關閉狀態
Monitoring of opening/closing via magnetic switch



型材無需另做加工
No machining of profile

無鎖桿
No locking bars

針對環境因素提供保護，防濺水的電子裝置
Protected against environmental factors, splash-proof electronics

智能窗：通過BUS技術控制或手動操作
Intelligent window: controlled either manually or via BUS technology

人性化的操作功能
Intuitive operation in real time

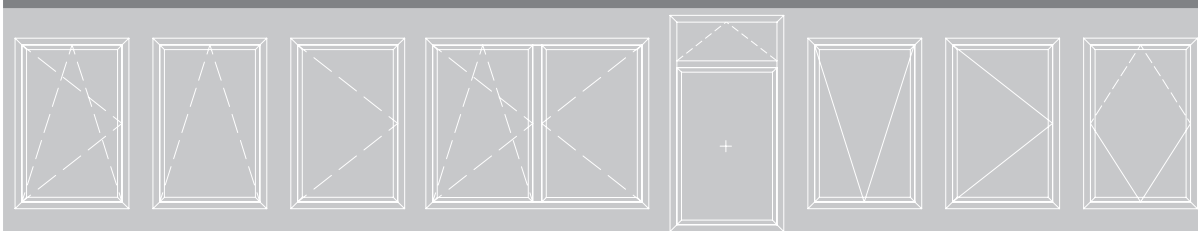
安裝簡易
Easy installation of components thanks to sliding blocks and piercing technology

開啟方式 Opening types

通用設計機械電動窗，包括氣窗、中懸窗與通風百葉等，經由自動控制設計，為使用者帶來更多方便。

The comprehensive selection of opening types for mechatronic windows, including toplights, horizontal pivot windows and ventilation flaps, allows a universal design with control options for maximum convenience.

开启方式 / Opening types



帶有Schüco TipTronic的中懸窗，也可通過遙控操作
Horizontal pivot windows with Schüco TipTronic, can also be operated remotely



帶有Schüco TipTronic的通風百葉
平開：利用夜間冷卻節約能源
Ventilation flap with Schüco TipTronic side-hung: saving energy using night-time cooling



Schüco AWS 65 TipTronic 外開
含中間密封膠條（平開，外框上懸）
Schüco AWS 65 TipTronic, outward-opening, with centre gasket (side-hung, top-hung)

旭格遙控產品：便利與尊榮

Schüco remote control products: prestige and convenience

只需觸動一個按鈕，即可簡單方便將窗戶開啟、關閉或通風；旭格最新技術AvanTec遙控把手與旭格TipTronic五金組件，為窗戶的自動操作提供最高度的便利性。

遙控把手的使用也可完成電動遮陽系統的操作；所有旭格AvanTec遙控把手的設計，皆能與旭格的把手系列相互匹配。從智慧化控制到高隔熱效率的型材，旭格AWS窗系統擁有極佳的便利與安全性，是提升不動產價值與尊榮度的不二選擇。

Opening, closing and ventilation – simple and safe at the touch of a button. Thanks to the most up-to-date technology, the new Schüco AvanTec remote control handle with one or more radio channels offers maximum convenience in the automatic operation of windows and toplights in conjunction with Schüco TipTronic fittings.

Electrically-operated Schüco solar shading systems can also be controlled individually using the remote control handle. All Schüco AvanTec remote control handles are available to match the designs in the Schüco handle range. From the intelligent handle to the highly thermally insulated profile, the Schüco AWS window system clearly increases the prestige and value of a property through greater convenience and security.



方便的氣窗操作
使用Schüco AvanTec把手
Convenient toplight operation with
Schüco AvanTec handle



Schüco AvanTec 單頻道遙控把手，
與Schüco TipTronic的外觀

Schüco AvanTec remote control handle with one radio channel and the appearance of the Schüco TipTronic handle.



Schüco AvanTec 單頻道遙控執手，
新穎的設計

Schüco AvanTec remote control handle with one radio channel and new design



Schüco AvanTec 三頻道遙控執手，
帶有選擇開關

Schüco AvanTec handle with selector switch for 3 radio channels



能源與設計

Energy and Design



能源與設計 Energy and Design

通用的執手設計，
適合各種用途
A universal handle design
for every use



在推動自動化功能融合入建築外牆的同時，對於設計的要求也日漸提升。例如在鋼製型材和鋁擠型材中加入電動機和控制裝置，或是加設外觀協調的遮陽裝置，都是對於造型、功能與品質之間的均衡發展的需求。

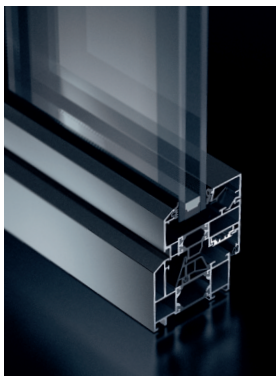
每個旭格產品，無論是從美學或是技術角度，都面臨功能與永續美觀的問題，因為建築外牆所有新納入的組件，都必須與系統中的現有組件相互搭配。旭格的設計，將高品質的表面處理，融合創新、便利的技術，加上耐久與易操作的特性，創造產品的真正價值。

With the increasing significance of the modern building envelope as a support for automatic functions, design requirements are increasing. For the integration of electric actuators and controls in particularly slim-line steel and aluminium profiles, for example, or with the harmonious configuration of external solar shading blades, the balance of form, function and finish is crucial.

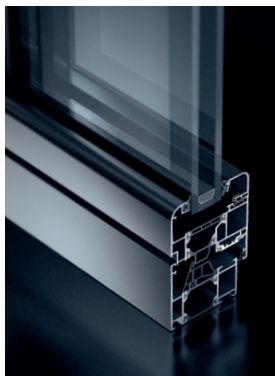
Every Schüco product poses the question of functional and timeless design, not only from an aesthetic point of view, but always from a technical point of view, as all new elements of a building envelope must match the existing components in a system group. Design solutions from Schüco combine high-quality surface finishes and superior styling with innovative, user-friendly technology. In conjunction with the durability and ease of operation of all products, solutions from Schüco thus create real added value.

纖細的輪廓－永恆的設計

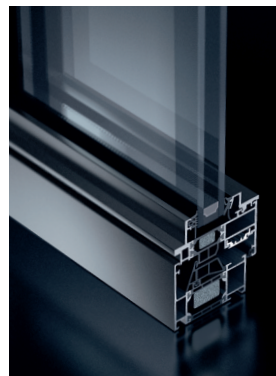
Narrow contours – timeless design



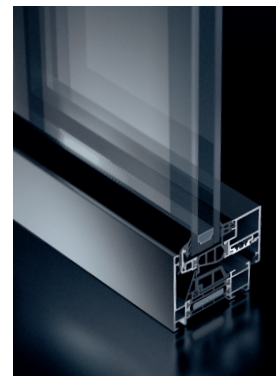
旭格 **AWS 65 RL**
斜切外部輪廓
(Residential Line)
Bevelled external contour
(Residential Line)



旭格 **AWS 65 SL**
弧形外部輪廓
(Soft Line Contour)
Rounded external contour
(Soft Line contour)



旭格 **AWS 70 ST.HI**
纖細的鋼質外觀
(Steel Contour)
Narrow steel appearance
(Steel contour)



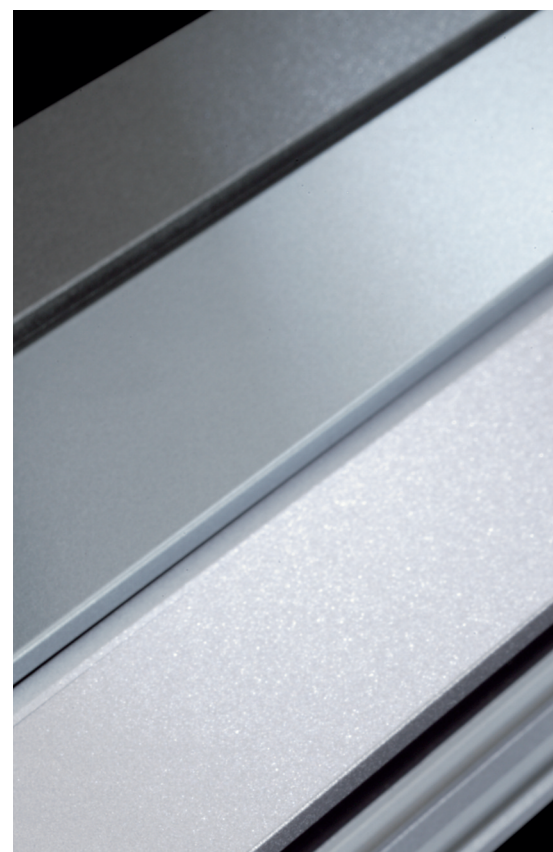
旭格 **AWS 75 BS.HI**
纖細框寬的隱扇
(Blocksystem)
Concealed vent with narrow
face width (block system)

無論是使用於新建案或是舊樓翻新工程，旭格AWS與ADS鋁門窗系統都具備一個相同的特點，那就是窗戶中玻璃面積的比例增加了。這代表室內會有更充足的光線、更舒適的生活環境，以及更優雅、美觀的外牆。

旭格鋁門窗系統不僅可以選擇不同的表面處理的方式與顏色，還可以選擇室內外使用不同的外觀。從柔和的弧形到完美的直線，旭格鋁門窗系統提供個性化設計的選擇。

An important feature for both new-build and renovation projects is that Schüco AWS windows and ADS doors increase the proportion of glazing in the window. This means more light, a more pleasant living environment and a façade imbued with a timeless elegance.

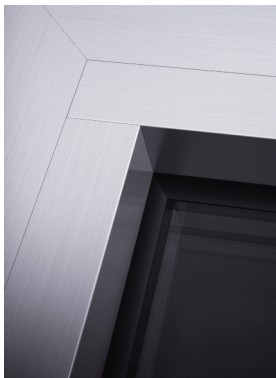
The new window systems are available not only in different surface finishes and colours but also with a different look inside than outside. They range from gently rounded to perfectly straight - for creating individual design solutions.



完美、耐用的表面處理
Surface finishing for a
perfect finish

個性化的特殊玻璃壓蓋

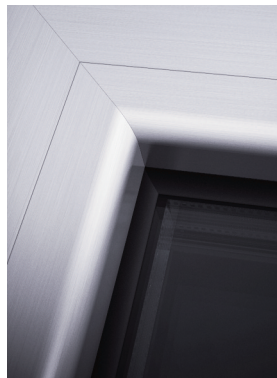
Individualisation with feature glazing beads



直角玻璃壓蓋
Glazing bead
with butt joint



倒角玻璃壓蓋
Glazing bead with
corner piece



圓弧玻璃壓蓋
Mitred
glazing bead



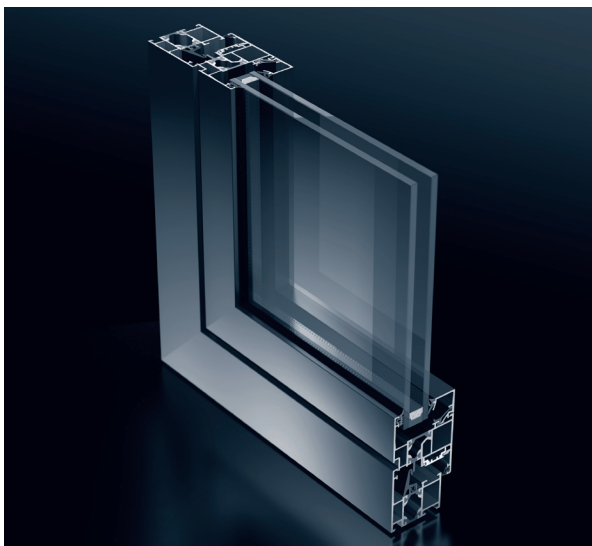
鋼質外觀玻璃壓蓋
Glazing bead
with steel contour

勻稱的窗戶造型賦予帷幕牆簡潔的外觀，窗戶內側的造型亦可成為設計上的特色，突顯個人風格的個性化設計。

旭格多種玻璃壓蓋造型的選擇，能夠實現窗戶的個性化設計。從簡潔的直線型輪廓到擁有纖細鋼質外觀的弧形輪廓，可選配的特色玻璃壓蓋提供了豐富的個性化選擇。

While the uniformity of the windows gives the façade an impressive compactness, inside the windows should be a design feature and therefore designed as individually as possible.

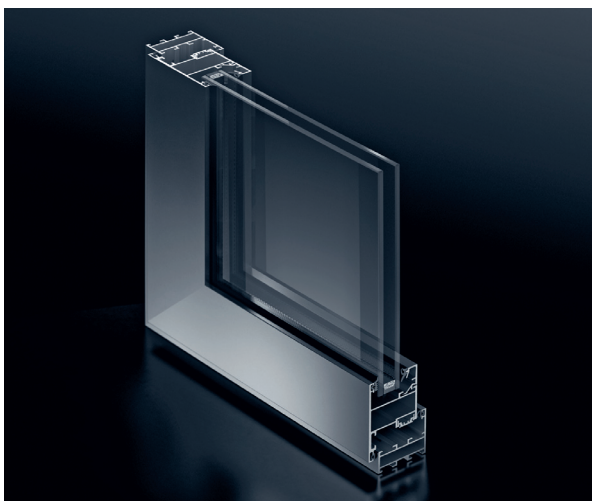
Here, the comprehensive range of feature glazing beads enables you to customise the design of your Schüco window. Whether rounded, mitre-cut or with corner pieces, the feature glazing beads available offer a wide choice, from nice straight contours to rounded versions with a narrow steel look.



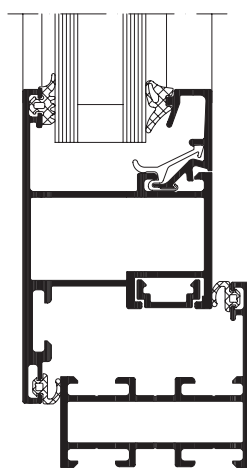
旭格鋁窗 AWS 50
Schüco Window AWS 50

旭格鋁窗 AWS 50 Schüco Window AWS 50

- 結構厚度為 50mm
- 纖細的窗框面寬，最小 74mm
- 可採用扇框平齊、外開或內開形式
- 轉角接合採用壓製與鉚釘插銷雙重工法
- 最大可承受扇重為 130kg
- 與旭格鋁門 ADS 50 相容
- 外開形式與隔熱 AWS 窗系統使用相同五金組件
- Basic depth of 50 mm
- Narrow profile face widths from 74 mm
- Available as flush-fitted or outward-opening vent
- Crimped and nailed corner cleats
- Max. vent weight 130 kg
- Compatible with Schüco ADS 50 doors
- Outward-opening vent with same fittings as for the insulated Schüco AWS design



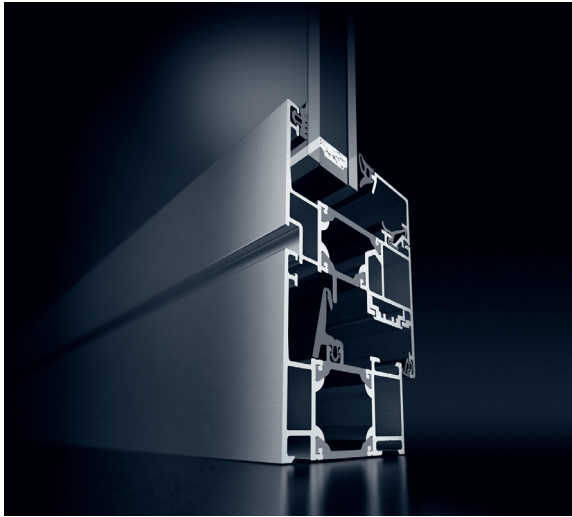
旭格鋁窗 AWS 50.NI
Schüco Window AWS 50. NI



旭格鋁窗
AWS 50.NI
外開
比例 1:2
Schüco Window
AWS 50.NI
outward-opening
Scale 1:2

技術參數 Technical data

檢測	標準 Standard	結果 Standard	Test
防盜	DIN V ENV 1627	WK1	Burglar resistance
水密性	DIN EN 12208	等級 Class 9a	Watertightness
氣密性	DIN EN 12207	等級 Class 4	Air permeability
抗風壓能力	DIN EN 12210	等級 Class C3/B3	Wind resistance



旭格鋁窗 AWS 60
Schüco Window AWS 60



旭格鋁窗 AWS 60 BS
Schüco Window AWS 60 BS

旭格鋁窗 AWS 60 Schüco Window AWS 60

在旭格隔熱鋁窗系列中，AWS 60 是屬於精緻且實用的等級；其所有零組件均來自同一供應來源，包括：鋁擠型、五金組件、隔熱材料、密封膠條及固定件。

主要特點：

- 高隔熱性能，而結構深度僅 60mm – 也可選擇 HI 級別的配件
- 高相容度的配件（例如：玻璃膠條、開啟形式以及五金件）
- 提供個性化設計選擇
- 符合當今工業標準
- 防盜等級達 WK2 級

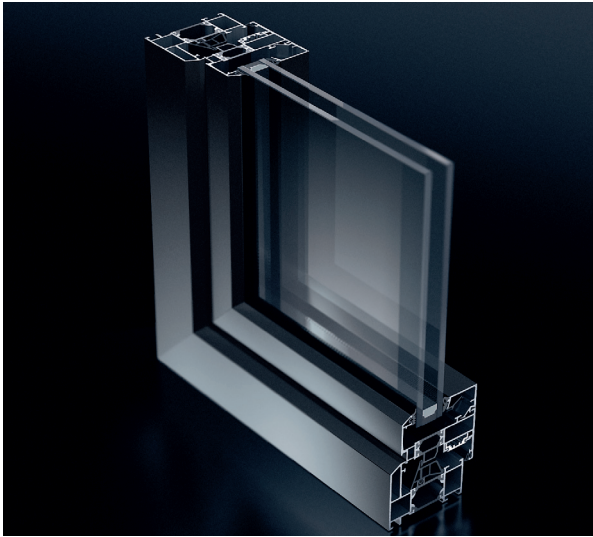
AWS is a compact window system of Schüco. All the components are provided from a single source: profiles, fittings, insulation, gaskets and fixings.

Key features:

- High thermal insulation with basic depth of only 60mm – also in highly thermally insulated HI design
- Compatible range of accessories (e.g. glazing bead, type of opening and fittings)
- Many individual design options
- Fulfillment of all current industrial standards
- Burglar resistant to WK2

技術參數 Technical data

檢測	標準 Standard	結果 Standard	Test
防盜	DIN V ENV 1627	WK2	Watertightness
水密性	DIN EN 12208	等級 Class 7a	Watertightness
氣密性	DIN EN 12207	等級 Class 4	Air permeability
抗風壓能力	DIN EN 12210	等級 Class C3/B3	Wind resistance

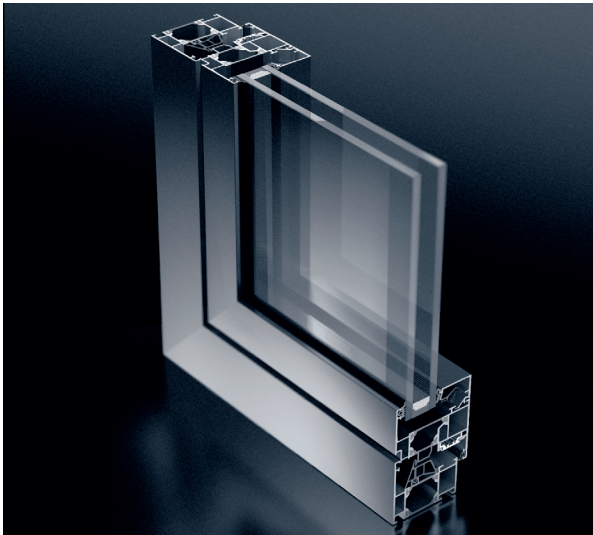


旭格鋁窗 AWS 65 RL
Schüco Window AWS 65 RL

旭格鋁窗 AWS 65 Schüco Window AWS 65

屬於旭格標準窗型的旭格 AWS 65 擁有各種齊全的系列，提供豐富且具有創造性的選擇，特別適用於結構深度為 65mm 的建築外牆。

The basic window system, Schüco Window AWS 65, with a comprehensive range for imaginative designs, is particularly suitable for block constructions with a basic depth of 65 mm.



旭格鋁窗 AWS 65 SL
Schüco Window AWS 65 SL

旭格鋁窗 AWS 65

- 提升 65mm 結構深度的隔熱性能：U_f 值為 2.2W/m²K（窗框面寬 117mm）
 - 可採用扇框平齊或外開扇
 - 多種造型選擇，包括 Schüco AWS 65 RL（切角線條），Schüco AWS 65 SL（柔和線條）和 Schüco AWS 65 MC（多造型線條）
 - 與旭格鋁門 ADS 相容
- Improved thermal insulation for basic depths of 65 mm: U_f values of 2.2 W/m²K (face width 117 mm)
 - Available as flush-fitted or outward-opening vent
 - Wide profile range including the design systems Schüco AWS 65 RL, (Residential Line) Schüco AWS 65 SL (Soft Line) and Schüco AWS 65 MC (Multi Contour)
 - Compatible with Schüco ADS door range

技術參數 Technical data

檢測	標準 Standard	數值 Value	Test
隔熱	DIN EN ISO 10077-2	U _f = 2,2 W/m²K ¹⁾	Thermal insulation
隔音	DIN EN 20140	可達 up to SSK 5	Noise reduction
防盜	DIN V ENV 1627	WK3	Burglar resistance
水密性	DIN EN 12208	等級 Class 9a	Watertightness
氣密性	DIN EN 12207	等級 Class 4	Air permeability
抗風壓能力	DIN EN 12210	等級 Class C5/B5	Wind resistance

¹⁾窗框面寬117 mm ¹⁾117 mm face width



旭格鋁窗 AWS 70 BS.HI
Schüco Window AWS 70 BS.HI

旭格隱扇窗系統 Schüco block window systems

由於隱藏了窗扇的內框，旭格隱扇窗系統擁有極為優雅簡潔的外觀；運用外框完全遮蓋窗扇內框的設計，纖細的外框因此營造出更大面積的透明玻璃區域。旭格隱扇系統特別適合融入到旭格的帷幕牆系統中。

Schüco block systems create a particularly elegant design with concealed window vents. This attractive design option, where the outer frame completely covers the vent frame of the window, creates large transparent glazed areas due to its extremely narrow frame. Schüco block systems can be integrated seamlessly into Schüco façade systems.



漂浮式造型鋁窗
Floating Window

- 帶有隱藏式內框的隱扇窗系統
- 隱藏式玻璃扣條使窗框外觀極為纖細，最小可達 67mm
- 多種鋁擠型材的選擇，包括使用於對開窗與裝飾窗，外觀寬度僅 44mm 的立柱
- 可塑造漂浮式造型
- 可採用 TipTronic 電動機械五金
- 結構深度可選擇 60、70、75mm
- Block window system with concealed vent frames
- Very narrow face widths from 67 mm due to concealed glazing beads
- Comprehensive profile range with mullion face widths of up to 44 mm, double vents and sash bars
- Can be selected as a "floating window"
- Schüco TipTronic can be used
- Available in basic depths of 65, 70 and 75 mm

技術參數 Technical data

檢測	標準 Standard	數值 Value	Test
隔音	DIN EN 20140	可達 up to SSK 5	Noise reduction
防盜	DIN V ENV 1627	WK3	Burglar resistance
水密性	DIN EN 12208	等級 Class 9a	Watertightness
氣密性	DIN EN 12207	等級 Class 4	Air permeability
抗風壓能力	DIN EN 12210	等級 Class C5/B5	Wind resistance



內建遮陽裝置
透過遙控把手操作
Integrated solar shading
Operated via remote control handle

旭格鋁窗 AWS 105 CC.HI Schüco Window AWS 105 CC.HI

複合式的旭格鋁窗AWS 105 CC.HI，提供最高等級的隔熱與隔音效果。適用於智慧型解決方案的AWS 105 CC.HI使用最新研發的隔熱條，其 U_f 值可以達到 $1.6\text{W/m}^2\text{K}$ 。夾層中的密封膠條與雙層玻璃的運用，達到出色的隔音性能。最小 74.5mm 的纖細窗框面寬，加上能夠抵禦天氣影響的遮陽裝置，為隔音隔熱氣密窗設定了新的標準。

- 雙層中央密封膠條構成四個排水層
- 外框中的空腔隔熱條設計，在節省空間運用的同時也增強窗框的穩固性
- 可以選擇隱框式的帷幕牆上懸窗
- 具有隱扇外觀的玻璃膠條
- 解決玻璃橫樑的需求，外視面寬僅為 50 mm
- 開啟方式：平開內倒，平開，下懸，先內倒後平開，對開扇。
- 最大扇重為 160 kg
- 防盜等級可達WK3

The composite window construction with maximum thermal insulation and noise reduction:

- Four drainage levels due to double centre gasket
- Hollow chamber insulating bar in outer frame with diagonal reinforcement for optimising dimensional accuracy and improving stability.
- Option: with SG front vent
- Glazing beads in blind-vent-look
- Solutions for glazing bars, face width 50 mm
- Opening types: turn/tilt, side-hung, bottom-hung, tilt-before-turn, double-vent
- Max. vent weight 160 kg
- Burglar resistance up to WK3 is possible
- Schüco TipTronic can be used

技術參數 Technical data

檢測	標準 Standard	數值 Value	Test
隔熱	DIN EN 10077-2	$U_f = 1,6\text{ W/m}^2\text{K}$	Thermal insulation
隔音	DIN EN 20140	可達 up to SSK 5	Noise reduction
防盜	DIN V ENV 1627	WK3	Burglar resistance
水密性	DIN EN 12208	等級 Class 9a	Watertightness
氣密性	DIN EN 12207	等級 Class 4	Air permeability
抗風壓	DIN EN 12210	等級 Class C5/B5	Wind resistance

旭格AvanTec五金組件系統

Schüco AvanTec

旭格AvanTec五金系統與眾不同的關鍵，就是它富有高度彈性的功能與簡易順暢的造型。加工安裝的廠商會發現AvanTec不論是在儲存、物流與組裝時，都擁有極高的效率；而建築師亦能感受到AvanTec在設計上的自由度與其所帶來的方便性。旭格AvanTec五金組件系統，延續旭格一貫的高品質規格，提供耐久、低維護成本與尊榮的品牌價值。

Schüco AvanTec appeals on account of its versatility and streamlined design. Fabricators benefit from simple handling, storage and assembly while architects can exploit the high degree of creative freedom afforded by the internal fittings. Investors especially appreciate the future potential of Schüco's

high standards, particularly their durability, low maintenance and the increased prestige they offer.



超強的功能

旭格AvanTec系統能夠承受高達130公斤的窗扇重量，並提供90度的最大開啟角度。方便三向調整的五金設計，使安裝更為簡便，也降低了在設計時的限制。

出眾的設計

無論是對建築師或業主，旭格AvanTec都能提供美觀、大方的簡潔設計方案。隱藏式的五金造就了窗框纖細且簡潔的外觀，不鏽鋼材質的運用，確保產品的耐用度並抵抗氣候的侵蝕。

統一的外觀

把手的設計並非只簡單的考慮造型，旭格在選擇舒適表面材質的同時，也融入了人體工學的思維。旭格將一個簡單的手把設計，轉變成一系列擁有相同造型與功能的語言。

Super function

Schüco AvanTec can be used with vent weights of up to 130 kg and opening angles of up to 90. This fitting is also easily adjustable in 3 dimensions, can be assembled simply and offers a more modest range of options without restriction design freedom.

Attractive design

Schüco AvanTec benefits both architects and investors alike. Narrow face widths and concealed fittings make for uninterrupted lines, whilst the use of stainless steel ensure excellent corrosion resistance.

Uniform appearance

The handles are not just attractively designed; they are also very ergonomic, with a pleasant surface feel. The incorporation of this handle into a single uniform range of handles also provides for a clear, unambiguous language in terms of design and appearance.